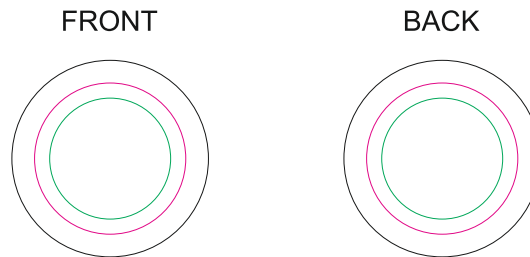


# DO



——— Margin

——— Edge of product

——— Bleed limit 3-3 mm (background must fill it)

resolution: min. 300 DPI

colours: CMYK

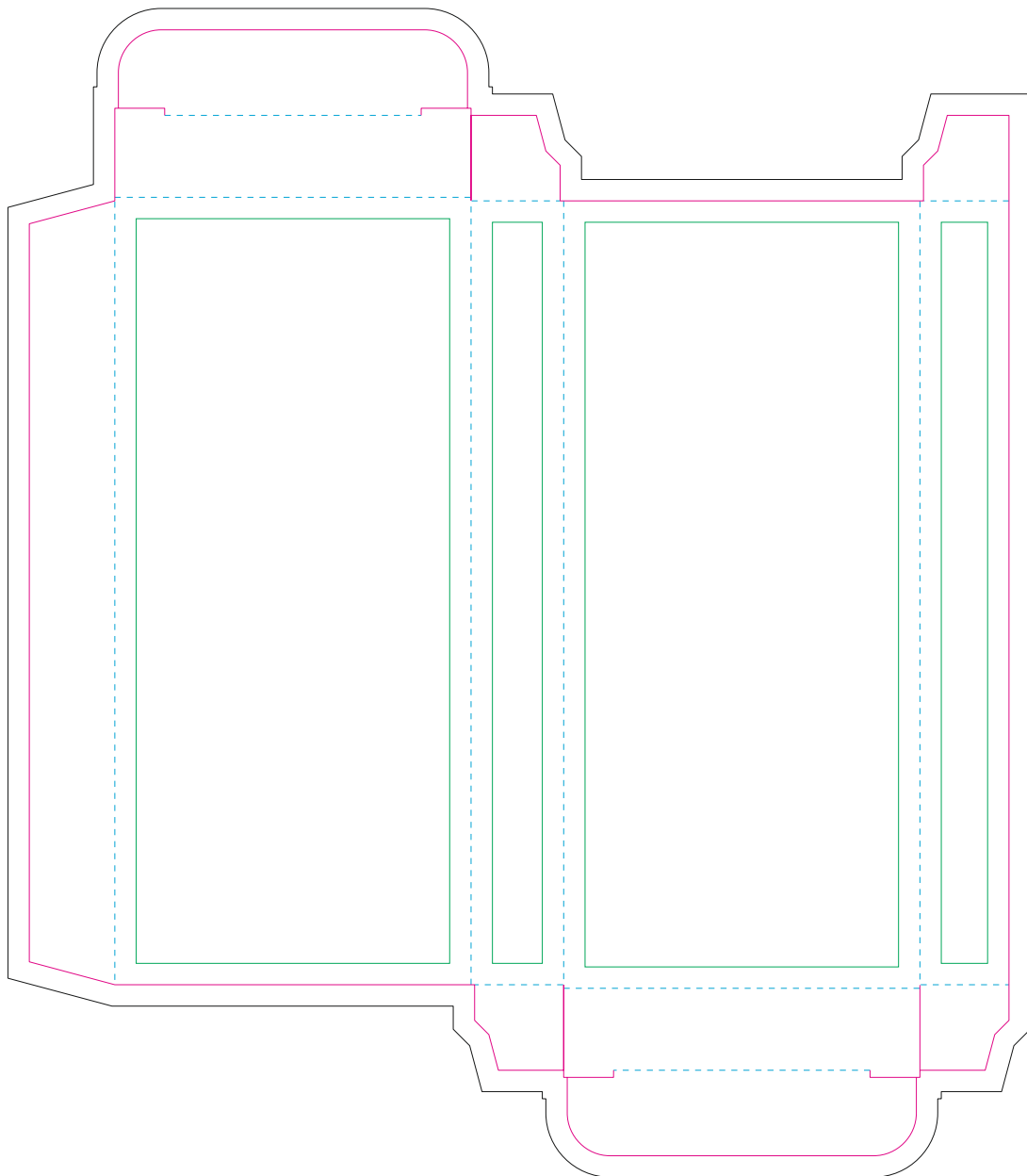
formats: TIFF, PDF, EPS, AI, CDR

The green line indicates the area all non-background object-texts, logos, etc.

The pink outline the maximum size of graphic visible on the product.

The black line indicates the size of the required graphics including bleed.

# Paperboard box

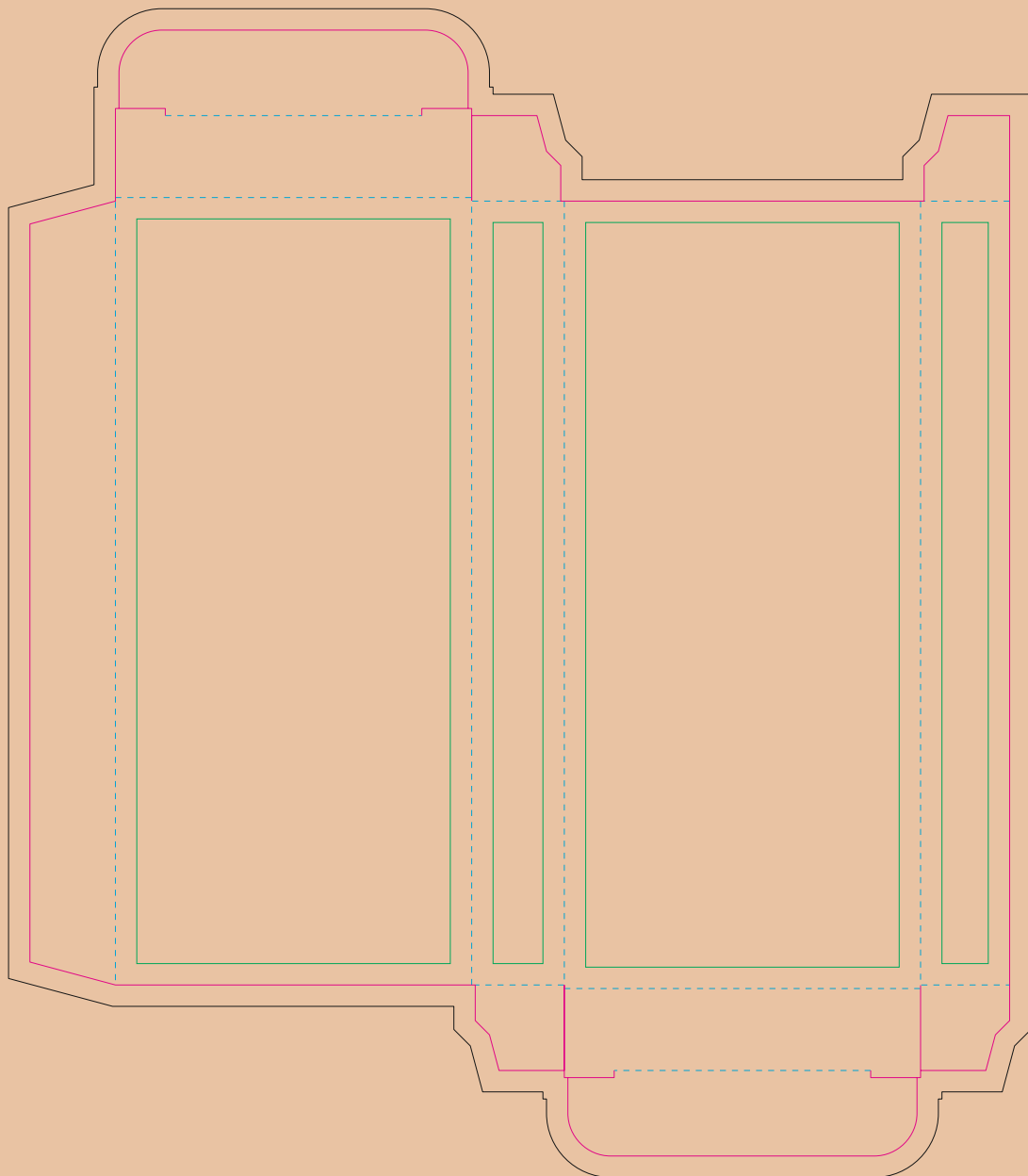


- Margin
- Edge of product
- Bleed limit 3-3 mm (background must fill it)
- - - - - Fold line

resolution: min. 300 DPI  
colours: CMYK  
formats: TIFF, PDF, EPS, AI, CDR

The green line indicates the area all non-background object-texts, logos, etc.  
The pink outline the maximum size of graphic visible on the product.  
The black line indicates the size of the required graphics including bleed.  
The blue line indicates the folding.

# Kraft paperboard box



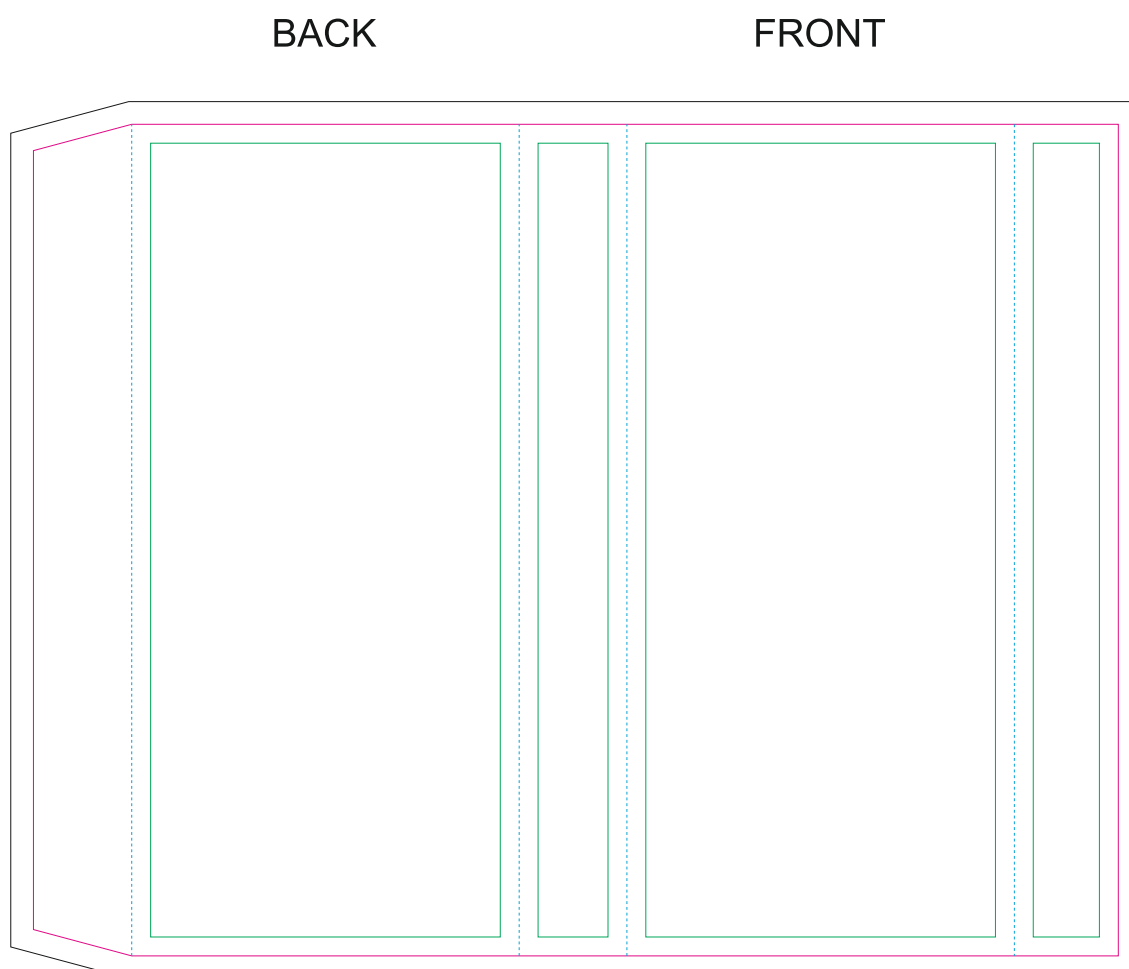
- Margin
- Edge of product
- Bleed limit 3-3 mm (background must fill it)
- - - - - Fold line

resolution: min. 300 DPI  
colours: CMYK  
formats: TIFF, PDF, EPS, AI, CDR

The green line indicates the area all non-background object-texts, logos, etc.  
The pink outline the maximum size of graphic visible on the product.  
The black line indicates the size of the required graphics including bleed.  
The blue line indicates the folding.

The size of the paper sleeve is for reference only as product packaging size may vary.

## Paper Sleeve



— Margin

— Edge of product

— Bleed limit 3-3 mm (background must fill it)

- - - - - Fold line

resolution: min. 300 DPI

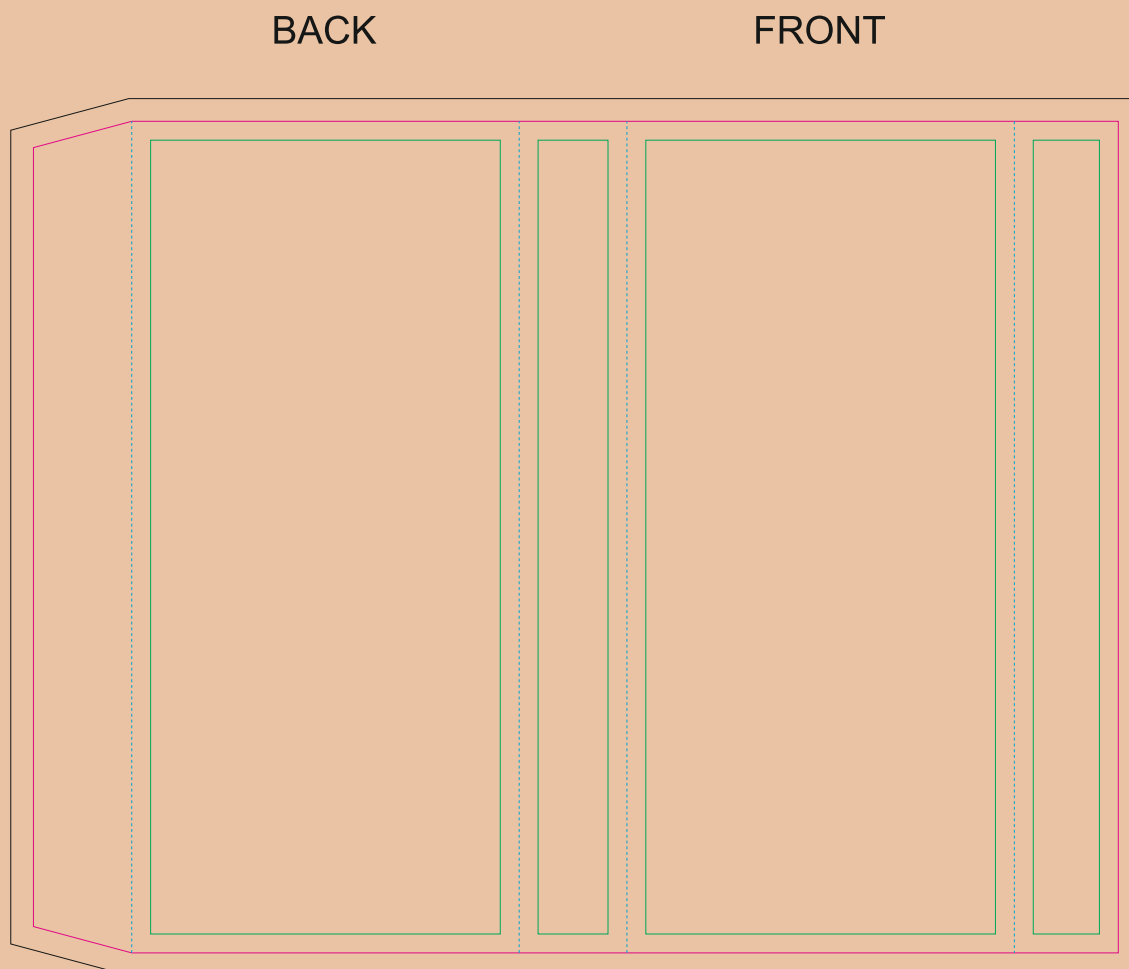
colours: CMYK

formats: TIFF, PDF, EPS, AI, CDR

The green line indicates the area all non-background object-texts, logos, etc.  
The pink outline the maximum size of graphic visible on the product.  
The black line indicates the size of the required graphics including bleed.  
The blue line indicates the folding.

The size of the paper sleeve is for reference only as product packaging size may vary.

## Kraft paper sleeve



— Margin

— Edge of product

— Bleed limit 3-3 mm (background must fill it)

- - - - - Fold line

resolution: min. 300 DPI

colours: CMYK

formats: TIFF, PDF, EPS, AI, CDR

The green line indicates the area all non-background object-texts, logos, etc.  
The pink outline the maximum size of graphic visible on the product.  
The black line indicates the size of the required graphics including bleed.  
The blue line indicates the folding.