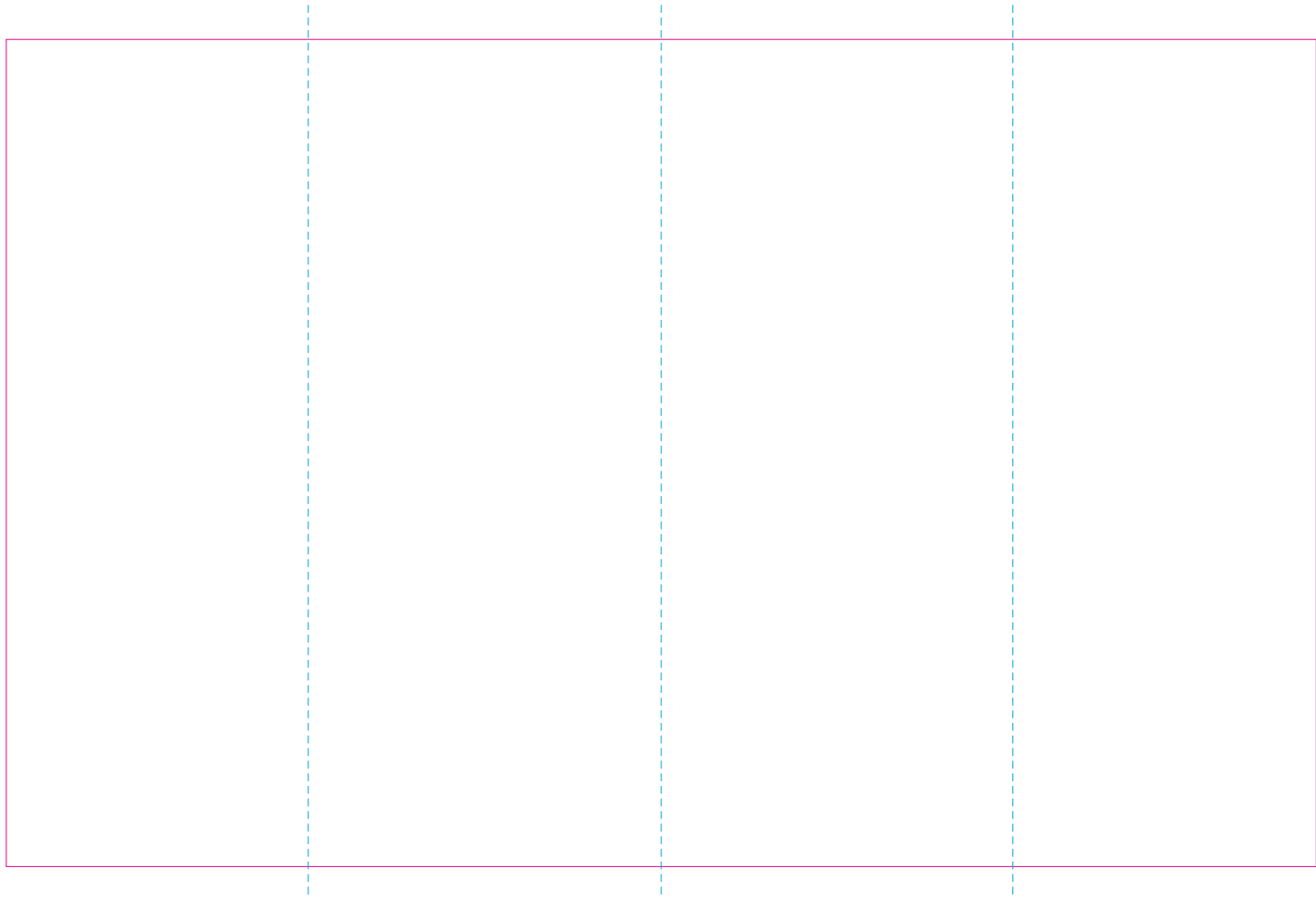
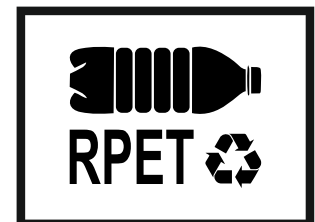


# RS



— Edge of graphics

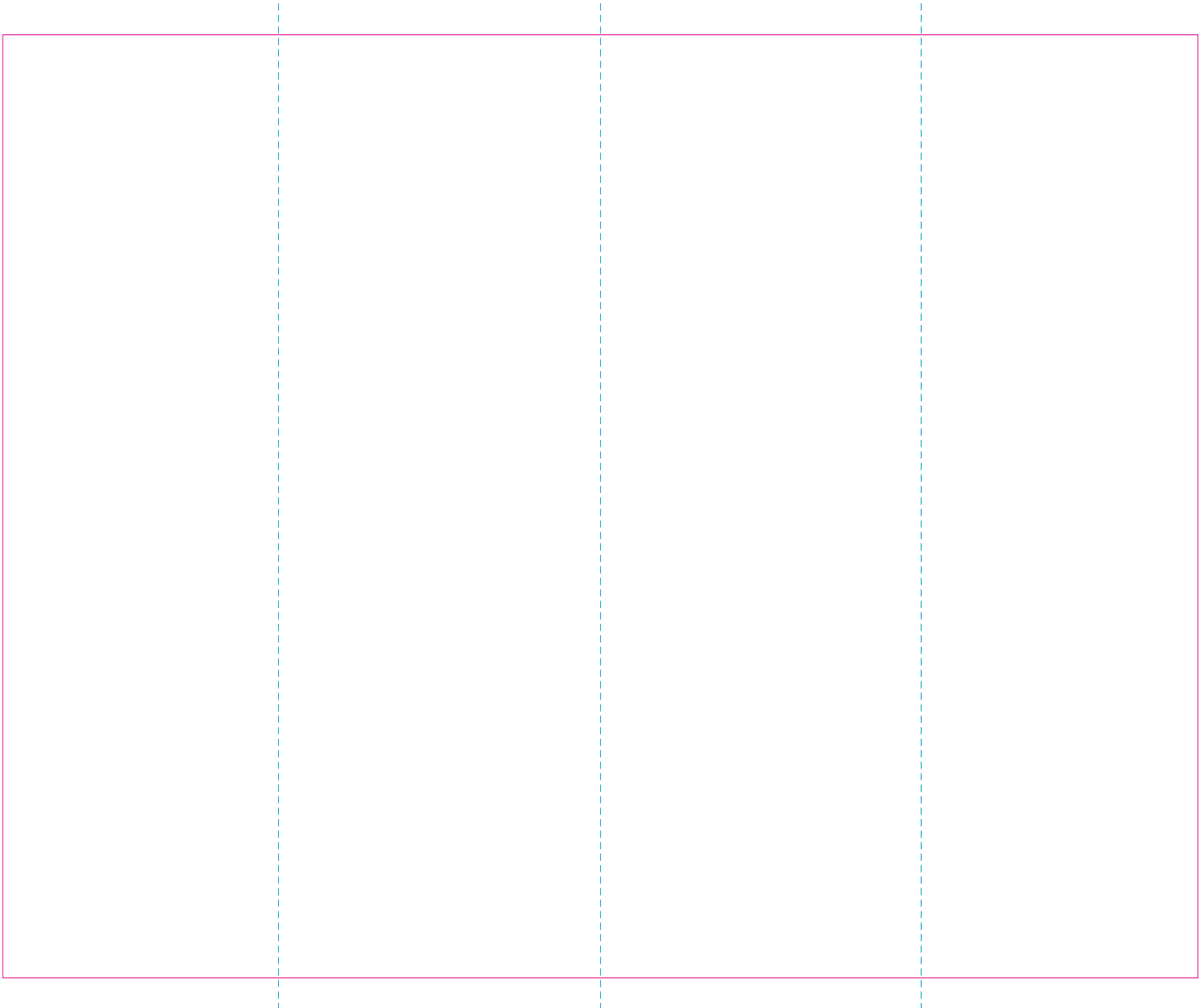
- - - centerlines



file format: vector  
colours: in one color  
formats: PDF, EPS, AI, CDR

The pink outline the maximum size of graphic visible on the product.  
The blue dash line indicates the center line of the left, right and middle side of object.

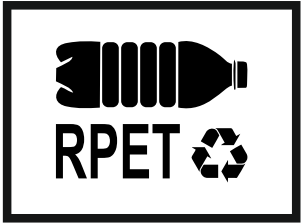
# RUV



— Edge of graphics

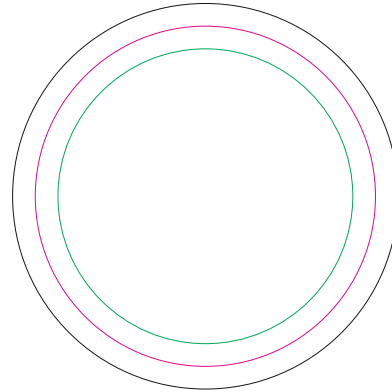
- - - centerlines

file format: vector  
colours: in one color  
formats: PDF, EPS, AI, CDR



The pink outline the maximum size of graphic visible on the product.  
The blue dash line indicates the center line of the left, right and middle side of object.

# DO



——— Margin

——— Edge of product

——— Bleed limit 3-3 mm (background must fill it)

resolution: min. 300 DPI

colours: CMYK

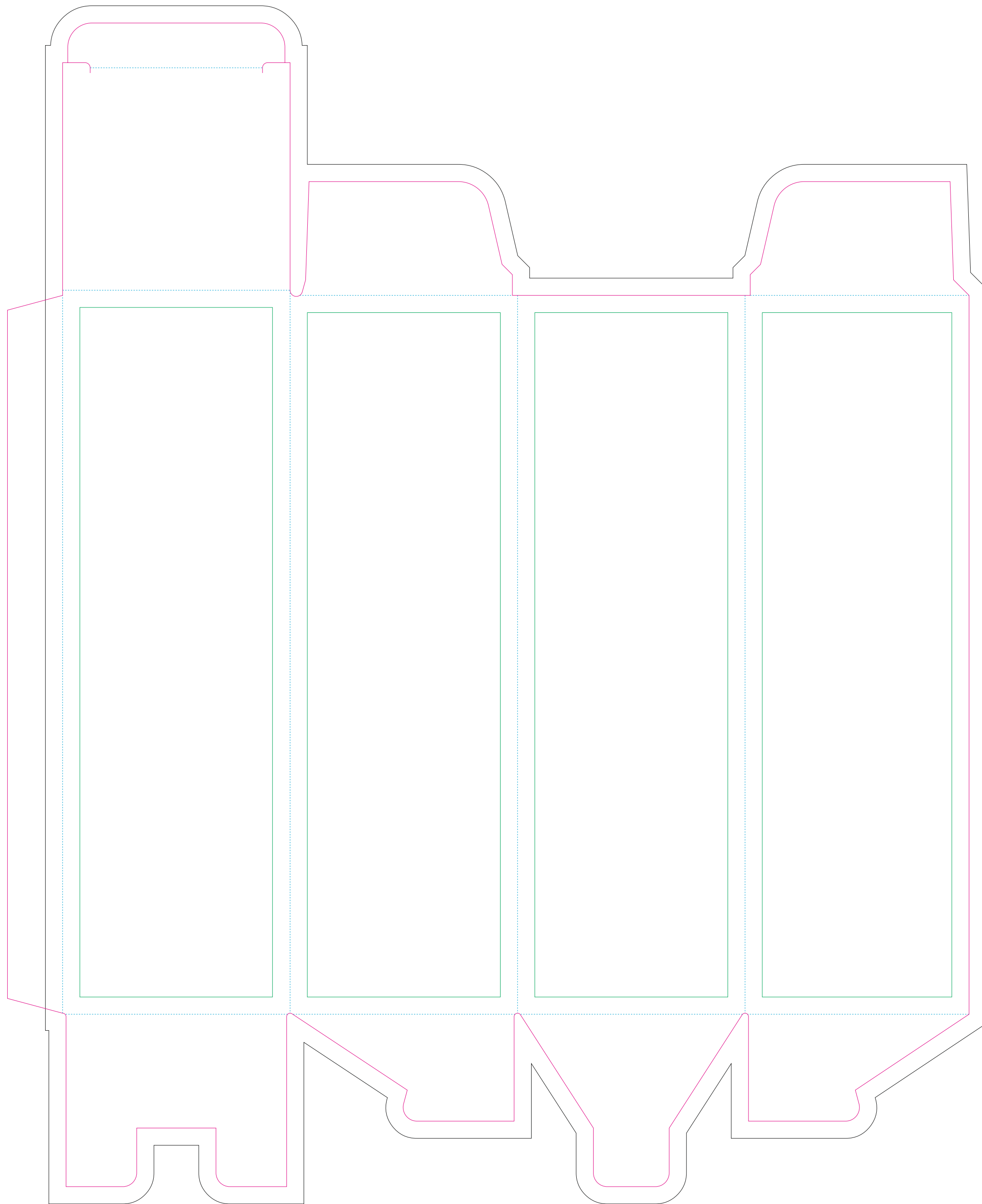
formats: TIFF, PDF, EPS, AI, CDR

The green line indicates the area all non-background object-texts, logos, etc.

The pink outline the maximum size of graphic visible on the product.

The black line indicates the size of the required graphics including bleed.

# Corrugated cardboard box

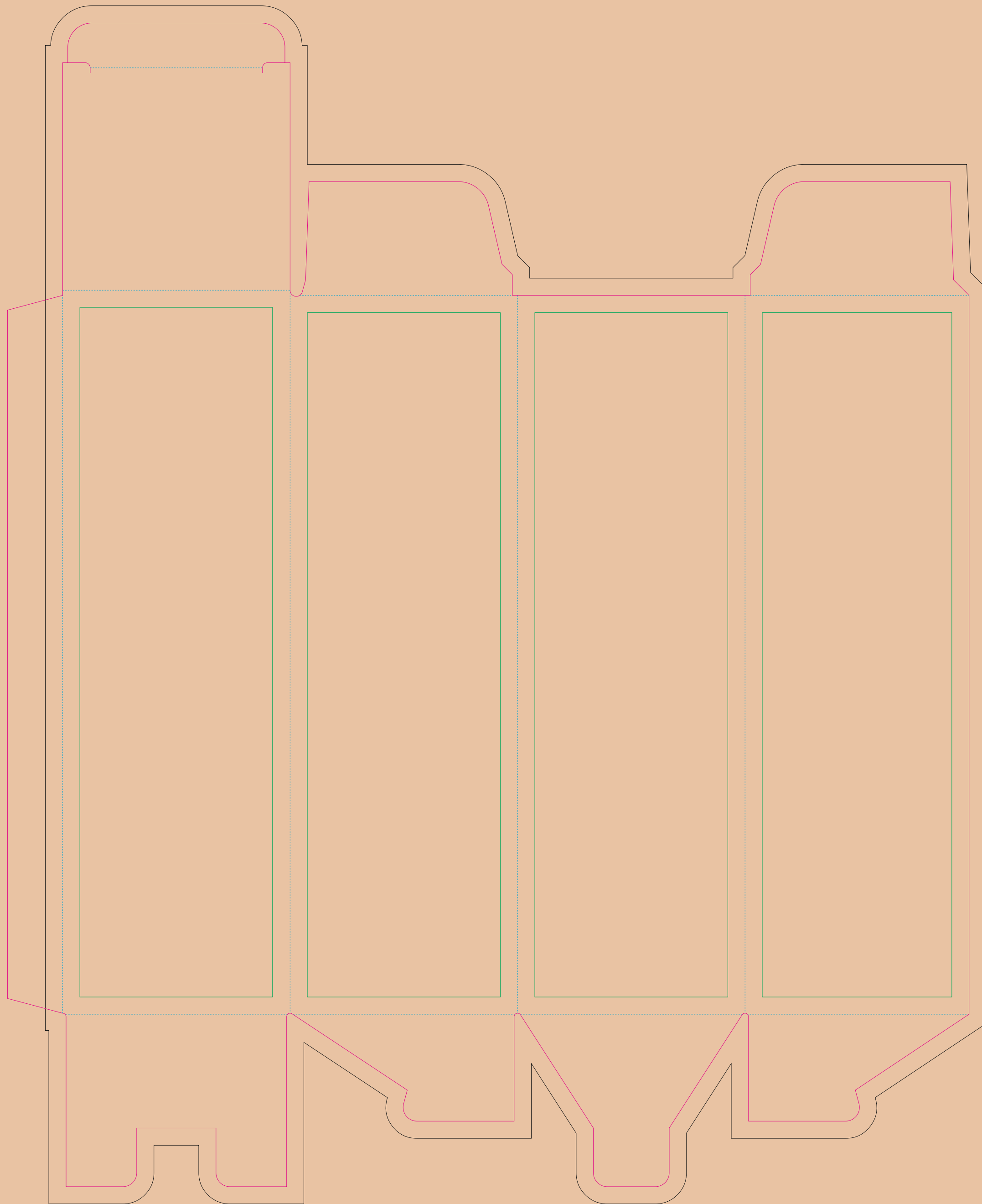


- Margin
- Edge of product
- Bleed limit 5-5 mm (background must fill it)
- - - - - Fold line

resolution: min. 300 DPI  
colours: CMYK  
formats: TIFF, PDF, EPS, AI, CDR

The green line indicates the area all non-background object-texts, logos, etc.  
The pink outline the maximum size of graphic visible on the product.  
The black line indicates the size of the required graphics including bleed.  
The blue line indicates the folding.

## Kraft corrugated cardboard box



- Margin
- Edge of product
- Bleed limit 5-5 mm (background must fill it)
- - - - - Fold line

resolution: min. 300 DPI  
colours: CMYK  
formats: TIFF, PDF, EPS, AI, CDR

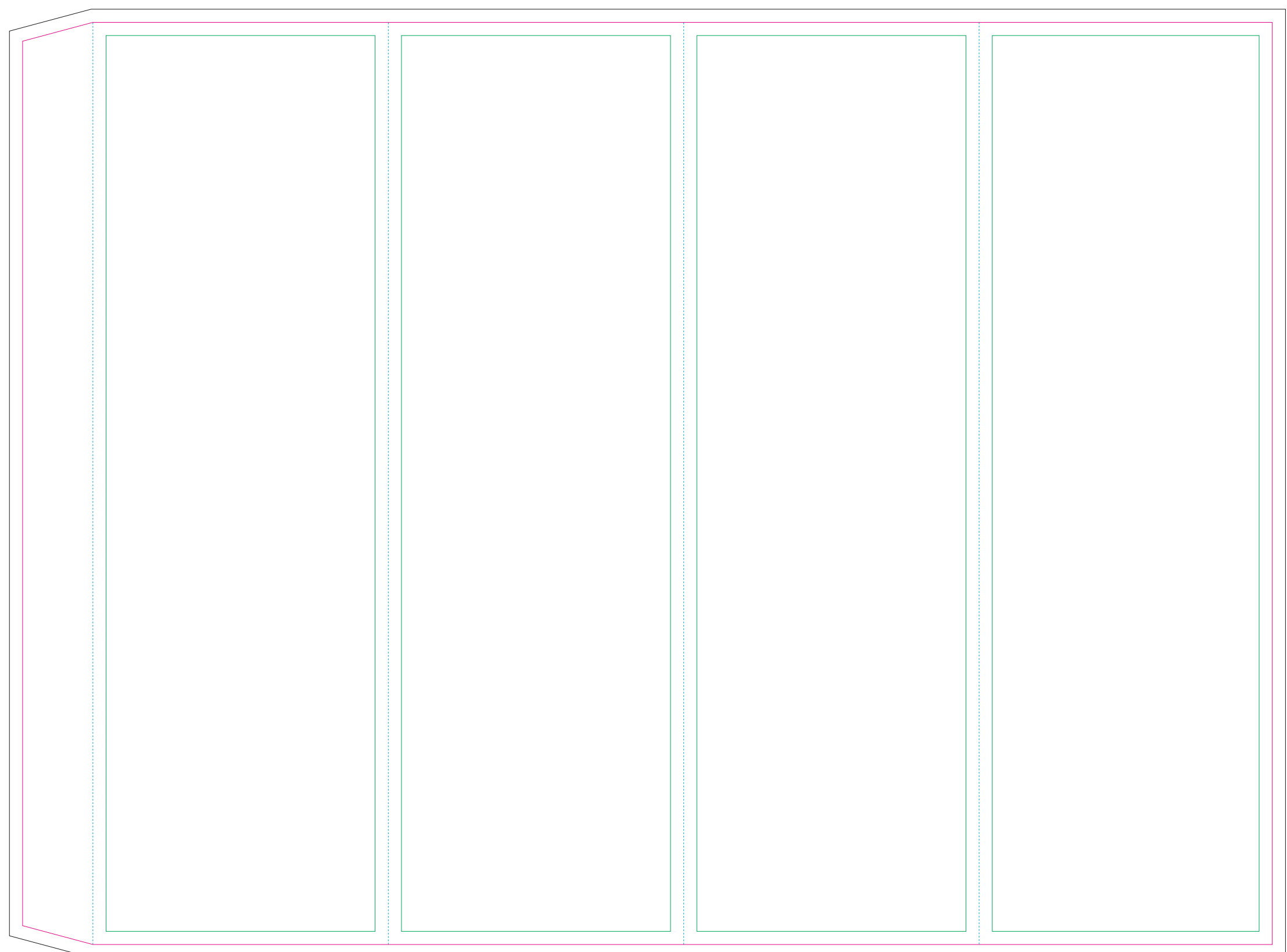
The green line indicates the area all non-background object-texts, logos, etc.  
The pink outline the maximum size of graphic visible on the product.  
The black line indicates the size of the required graphics including bleed.  
The blue line indicates the folding.

The size of the paper sleeve is for reference only as product packaging size may vary.

## Paper sleeve

BACK

FRONT



- Margin
- Edge of product
- Bleed limit 3-3 mm (background must fill it)
- - - - - Fold line

resolution: min. 300 DPI  
colours: CMYK  
formats: TIFF, PDF, EPS, AI, CDR

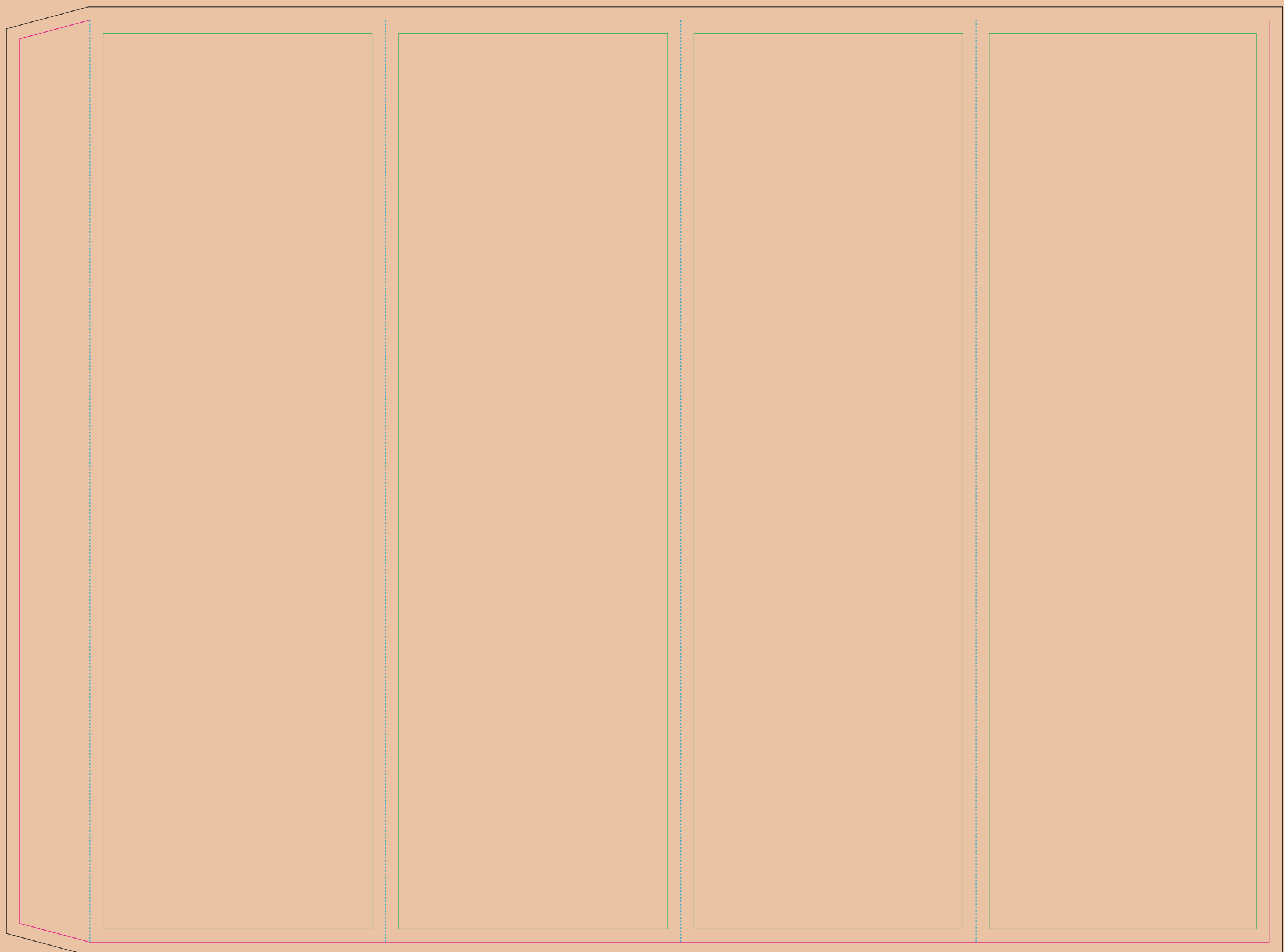
The green line indicates the area all non-background object-texts, logos, etc.  
The pink outline the maximum size of graphic visible on the product.  
The black line indicates the size of the required graphics including bleed.  
The blue line indicates the folding.

The size of the paper sleeve is for reference only as product packaging size may vary.

## Kraft paper sleeve

BACK

FRONT



- Margin
- Edge of product
- Bleed limit 3-3 mm (background must fill it)
- - - - - Fold line

resolution: min. 300 DPI  
colours: CMYK  
formats: TIFF, PDF, EPS, AI, CDR

The green line indicates the area all non-background object-texts, logos, etc.  
The pink outline the maximum size of graphic visible on the product.  
The black line indicates the size of the required graphics including bleed.  
The blue line indicates the folding.